

APPLICATION KIRLIANOGRAPHIY IN THE ESTIMATION OF EFFICIENCY OF IMPROVING ACTIONS

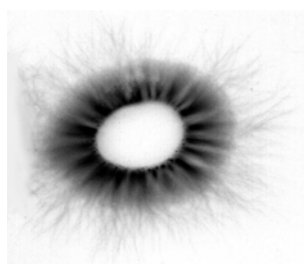
Pesotskaya L.A.

Theme urgency. By results of numerous researches of a state of health of people by the methods based on effect of Kirlian [2] donozological signs of formation of disease at power information level. Their elimination also is original preventive maintenance of diseases. At the heart of influence of applied methods of improvement in this case there should be a same level of human nature. To such requirements there correspond homoeopathic approaches in therapy. Besides, Kirlianography has shown that at this level all objects in environment cooperate. Therefore revealing of those with positive influence on a power condition of an organism possibilities Kirlianography are established to reveal nonspecific for their use in improvement is admissible.

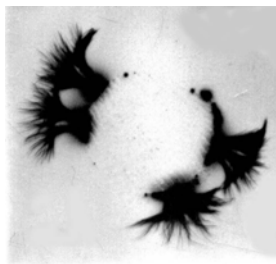
The work purpose - using a method of Kirlianography to study a state of health at children and adults before influence of improving actions homoeopathic, fito - preparations, minerals.

Research methods. For this inspections applied device "REK-1", developed in Dnepropetrovsk. Researches spent on a x-ray film. The analysis kirliangram spent by diagnostic criteria P.Mandel and own observations [3, 4, 5].

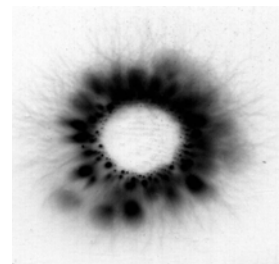
A normal luminescence crown around fingers is represented by an inner oval, a middle luminescence layer in the form of evenly located streamers. An outer layer of the crown is the luminescence – more or less dendrite thin beams evenly situated around the streamers. Prolapses appear in the luminescence crown during the astheneia, the vegetative and endocrine imbalance in the organism (pic.2), punctated protuberances – during the intoxication and the inflammation (pic.3,4), a degenerative type of fluorescence – during the development of dystrophy (pic.5).



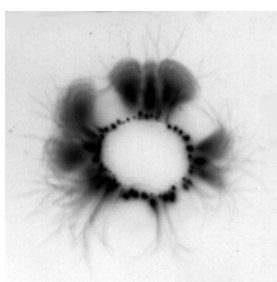
pic. 1



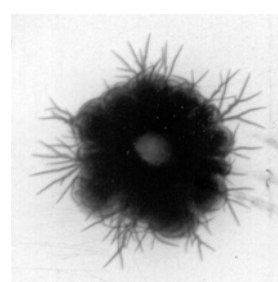
pic. 2



pic. 3



pic. 4



pic. 5

Results and their discussion.

At inspection of 86 children at the age from 8 till 15 years from families of liquidators of consequences of Chernobyl Disaster or immigrants with nearby to it of territories of Ukraine at more half signs of a vegeto-vascular dystonia, defects in area lymphatic rings of a neck, a thyroid gland, urinogenital sphere though any clinical-laboratory signs of diseases at the moment of inspection it has not been revealed are revealed. The first group of children (55 persons) did not receive homoeopathic correction of the changes revealed on a Kirlian-photo. The second group of children (31 persons) within 10 days received homoeopathic preparations anti-inflammatory, etc. actions in conformity to changes in a crown of radiations. The comparative analysis of Kirlian-photos after stay in sanatorium has revealed positive dynamics in a condition of power of an organism at the majority of children. The best results are received in group of children receiving homoeopathic preparations.

The received results are shown in the Table 1.

Table 1.

№	The defects in the luminescence crown On Kirlian-photos	Group 1 / Group 2			
		The number of children. %			
		Before treatment	After	Before treatment	After
1	Normal energy filling	17.6	82.3	25.8	100
	Prolapsus in the luminescence crown:				
2	The blockage in all systems	69.0	49.0	58.0	42.0
3	The secretion system	30.9	29.0	45.1	29.1*
4	The head area	43.6	31.4	36.7	22.5
5	The genital area	36.4	27.5	36.7	25.8
6	The throat area	36.4	33.3	51.6	32.2*
7	The respiratory system	16.3	17.6	3.2	6.4
8	Large intestine and rectum	21.8	25.5	16.1	9.3
9	Spine	27.3	23.9	19.3	9.3
	Intoxication:				
10	The respiratory system	40	49	36.7	35.4
11	Large intestine and rectum	41.8	47.0	42.2	36.7
12	The secretion system	61	60.8	48.4	42.2
13	The genital system	54.6	54.9	48.4	51.6
14	The head and throat area	70.9	72.5	54.8	48.4
15	The signs of emotional lability	63.6	41.1	61.3	48.4

Note: * - the difference between indices is statistically proved. ($p < 0,05$).

Remarkable was the preservation of the irregularity in the luminescence crown considering a big number of children. It may reflect the asthenia of the organism typical for Chernobyl syndrome. The last is a background for somatic diseases in future. The researches done by an academician E. Faidish (1997) showed that a strong emotional experience can lead to the formation of psycho-energetic clots and whirlwinds parasitic on a human's body and taking his energy away for a long time [8].

Kirlian-diagnostics have spent to 57 workers of one of the industrial enterprises. As a Kirlian-luminescence at everyone level reactions of adaptation [1] has been established and therapy by phytopreparations of manufacture of "Ekomed" (Kiev) is appointed to 3 months.

The first is the group consisting of workers with the first level of adaptation with the signs of endocrine emanation type according to Mandel, i.e. with the prolapse in the luminescence crown (pic.2) and the intoxication in the form of large dots which are partially away from the streamer ring (pic.3). In this case homeostasis is saved, the changes in the organism are quite reverse. The medicine was used for renewal of vegetative immune endocrine regulation as well as vascular system and the maintenance of excretion organ functions.

The second group included the patients with the second level of adaptation who had not only the signs mentioned above but also a minor dotted intoxication on the inner luminescence crown ring in many areas. That proved the endogenous intoxication and the reduction of disintoxication system functions and hepatobiliary in particular (pic.4). The phytodrugs of more general disintoxication effect were added to those ones described earlier.

The third group consisted of the patients with the third level of adaptation - the ones who had signs of degenerative type of fluorescence with the abnormalities in the pattern of the crown, the extension of bright area which is connected with common dystrophic changes in tissues (pic.5). The maintenance of the homeostasis needs a more profound disintoxication therapy and metabolic measures.

After improving therapy positive dynamics was at all surveyed with signs endocrine and toxic type of radiations (functional, jet conditions) in area of lympho pharynx rings, thick intestines, the respiratory and urinogenital sphere, regulating systems and at 95 % of persons with signs of degenerate type of radiations. That is, preliminary carrying out of Kirlian-diagnostics at workers of manufacture has allowed to reveal reserves of adaptation to an available pathology or its formation and to spend adequate pathogenetic therapy [6, 7].

This method has studied influence on a human body condition its stay in clay or shungite rooms for the purpose of working out of recommendations of indications for improvement in them.

Surveyed on 40 persons before stay during 10 - 20 minutes in clay or shungite rooms [9]. At the moment of inspection people were almost healthy or had various

chronic diseases out of an aggravation. At comparison of the received distinctions in change of those or other defects in a crown of radiations before stay in clay or shungite room, the following pays attention. At the analysis the status (on losses in a luminescence crown) more expressed beneficial influence on an organism of conditions of a clay room is marked at defects of power in the field of kidneys, feet, more beneficial influence shungite rooms in the presence of losses in power circulation in the field of nervous system (backbone), mentalities, immune system (rectum). The phenomena of emotional lability, dysfunction endocrine regulation equally effectively decreased in both groups of the surveyed persons. Disintoxication improving influence on an organism the clay room renders through solar plexus, mental regulation. Shungite room - through thick intestines, (connected with it lympho system), feet. Both reduce intoxication in the field of heart. Stay of patients, both in clay, and in shungite rooms not considerably reduces intoxication in the area of urinogenital sphere, a backbone that demands repetition of improving sessions, and, obviously, certain changes in a way of life of patients.

Conclusions.

1. The method of Kirlianography is sensitive enough and informative for an influence improving estimation.
2. The usage of Kirlianography is required along the examination of practically healthy people and children in particular for finding abnormalities in thin structures of the organism before forming and clinical laboratory detection of diseases.
3. The Kirlianography method of human adaptation reserves functional state research should be used in health-improving and medical practice, ecological population health-improving programmes for the estimation of the negative factors of the environment or the existing disease as well as the choice of a needed therapy.

LITERATURE

1. Garkavi L.H., Kvakina E.B., Kuzmenko T.S. Antistressornye of reaction and therapy. – M: Imedis, 1998. – 208 p.
2. Kirlian S.D. A.c. №106401, kl. G03B 41/00, 1949.
3. Mandel P. Energetische Terminalpunkt-Diagnose. Engan, 1983.-199 p.
4. Mintser O.P. The usage of Kirlianography for the diagnostics of children of pre-school age / L.A. Pesotskaya, A.I. Gorovaya and other, Kiev. – 20 p.
5. Mintser O.P, Gorovaya A.I., Pesotskaya L.A. The usage of Kirlianography for the health estimation of people working at industrial enterprises, Kiev.
6. Pesotskaya L.A., Gritsenko E.N. Way of an ekspres-estimation of adaptable reserves of a human body / Deklaratsionnyj the patent of Ukraine for useful model № 6602.—16.05.2005, Bul. №5.
7. Pesotskaya L.A., Gritsenko E.N. Is found selection and an estimation of efficiency of improving ways with use of Kirlianography. – Magazine phytotherapy. - 2006. - №3.—p. 24 – 31.
8. Faidish E.A. The noosphere and the global evolution of a human // consciousness and physical reality. – 1997. – V. 2, № 3. – p. 78 — 84.
9. Relaxation room / Lapitskii V.M., Goncharenko V.I., Pisotskaya L.A. / A patent for a model № 61914 from 10.08.2011.